

Visibility States

Visibility states:

- VisibilityState0
- No Lock-Door Contact -Exit Only
- No Lock-Door Contact Only
- NL-DC & LA
- NL-DC-REX
- NL-DC-REX & IC
- NL-DC-EPT-Exit Device
- NL-DC-TC-Exit Device-CR
- NL-DC-EPT-Exit Device-CR
- ✓ EL (Cylindrical Lock)-EPT-DC-Exit Device-CR**
- EL (Cylindrical Lock)-EPT-DC-Exit Device-CR-IC
- EL (Cylindrical Lock)-EPT-DC-CR-ICx2
- EL (Cylindrical Lock)-EPT-DC-CR
- EL (Cylindrical Lock)-EPT-DC-CRx2
- EL (Cylindrical Lock)-EPT-DC-REX-CR
- EL (Cylindrical Lock with Integrated DC, CR & REX)-EPT
- EL (Cylindrical Lock with Integrated DC & CR)-EPT-REX
- EL (Cylindrical Lock with Integrated DC & CR)-EPT-REX-Exit Device
- EL (Cylindrical Lock with Integrated DC & CR)-EPT-CR (Door Mounted)
- EL (Cylindrical Lock with Integrated DC & CR)-EPT-CR (Wall Mounted)
- EL (Mortise Lock With REX)-EPT-DC-CR
- EL (Mortise Lock With REX)-EPT-DC-Exit Device-CR
- EL (Mortise Lock With REX) & Manual Cylinder Lock-EPT-DC-CR
- EL (Mortise Lock With REX)-TC-DC-CR
- EL (Mortise Lock With REX)-TH-DC-CR
- EL (Mortise Lock With REX)-EPT-DC-CRx2
- EL (Mortise Lock With REX)-EPT-DC-CR-IC
- ES-DC-REX-CR
- ES-DC-REX-CR (Ingress/Egress)
- ES-DC-REX-Biometric Reader
- ES-DC-REX-Biometric Reader and CR
- ES-DC-CR-ADO-Exit Device
- ES-DC-CR (Egress)-ADA PB x2-ADO-Exit Device
- ES-DC-CRx2-ADA PBx2-ADO-Exit Device
- ES-DC-REX-CR-ADA PB-ADO-Exit Device-IC
- ES-DC-REX-CR-ADO-ADA PB-Exit Device
- ML(W/DC)-REX-CR-PB
- ML(W/DC)-IN/OUT CR

Set current

New...

Rename

Delete

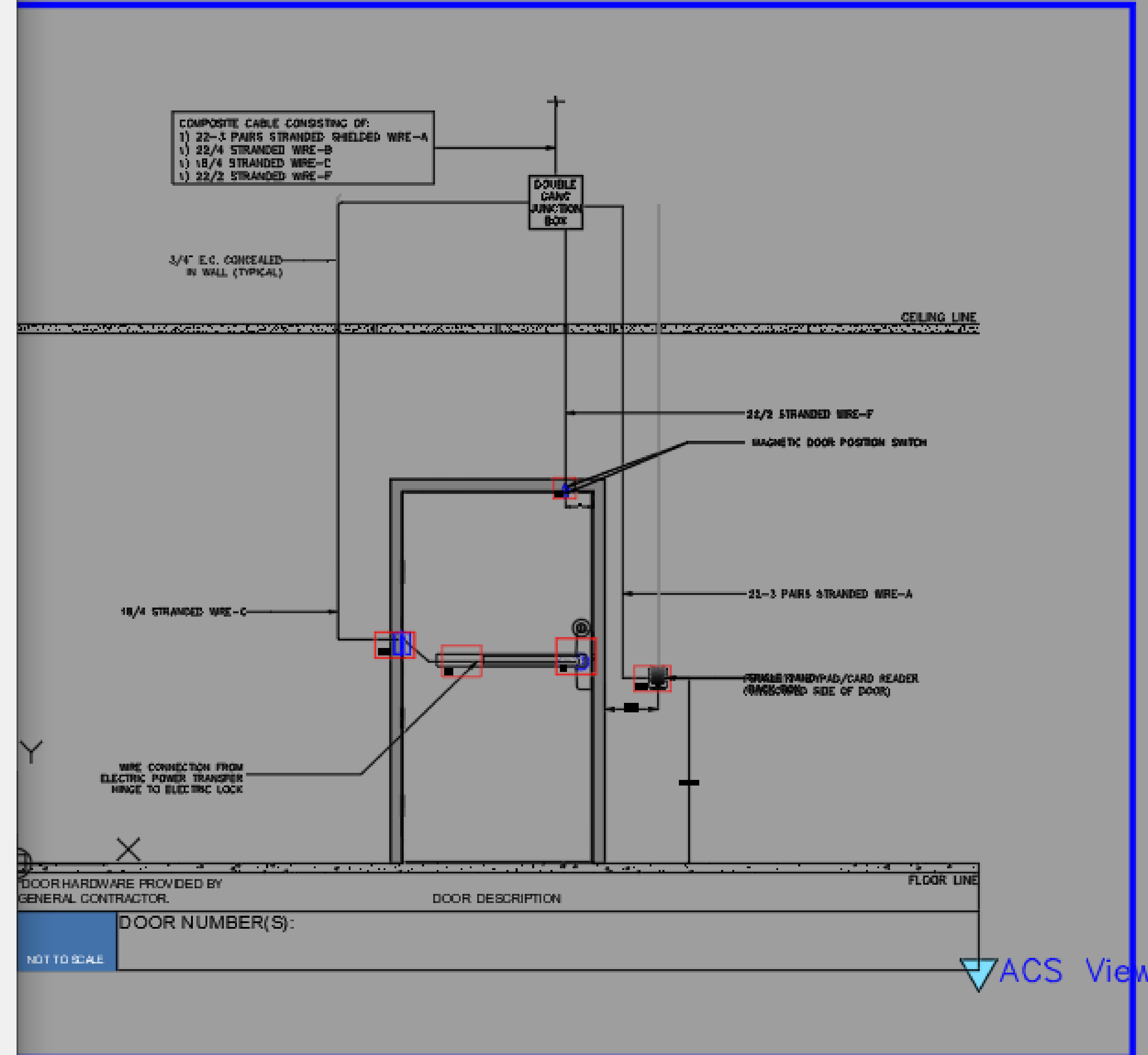
Move Up

Move Down

OK

Cancel

Help



ACS Views

Plot and Publish Job Complete

No errors or warnings found