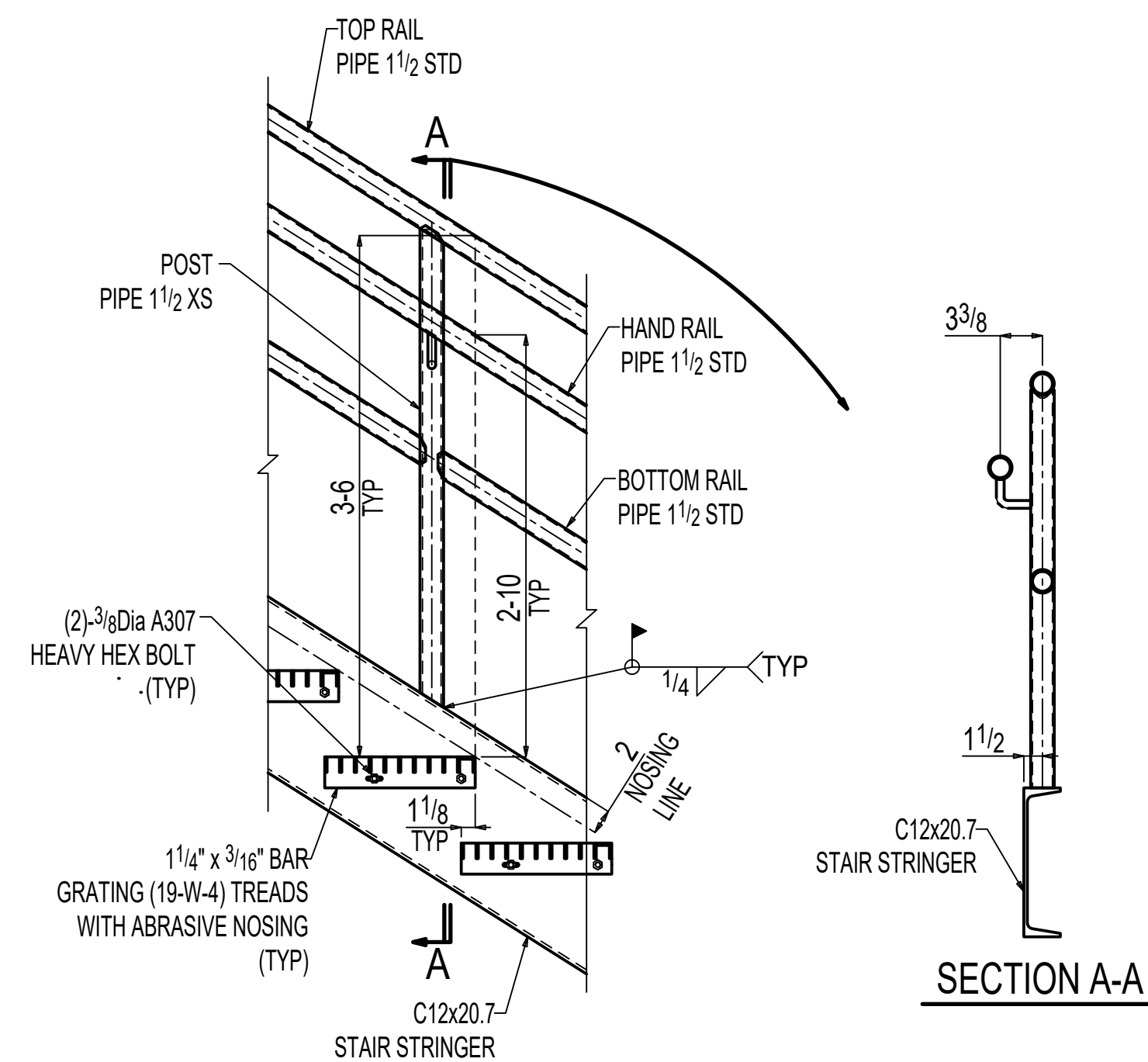
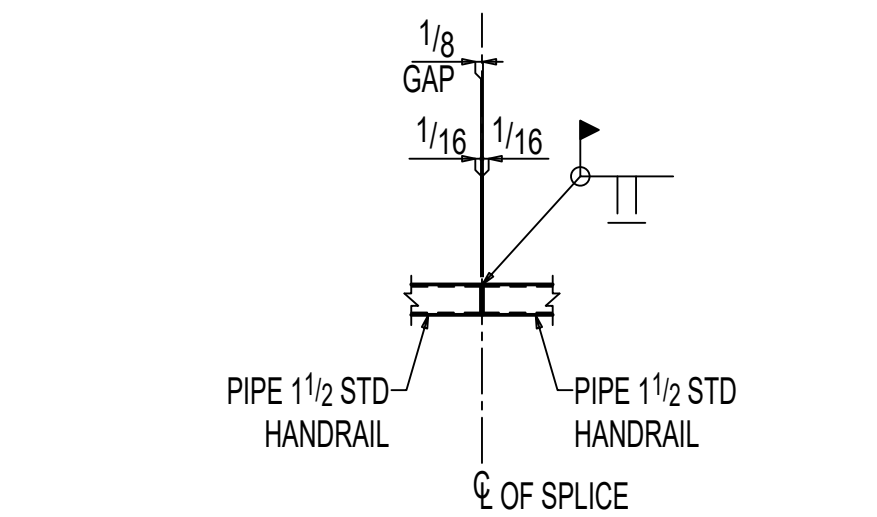


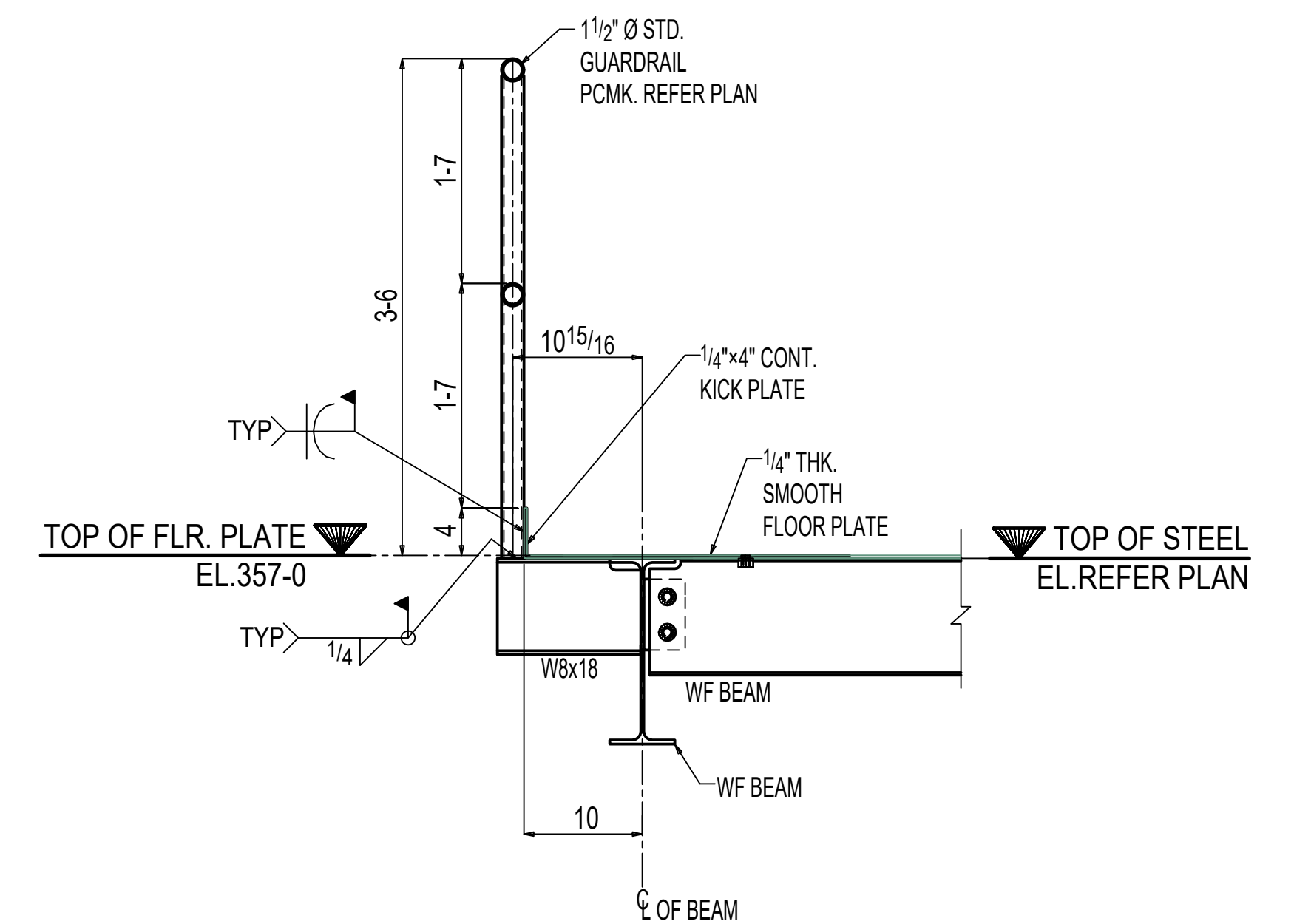
1 TYPICAL STRINGER TO CONCRETE CONN.
E9041



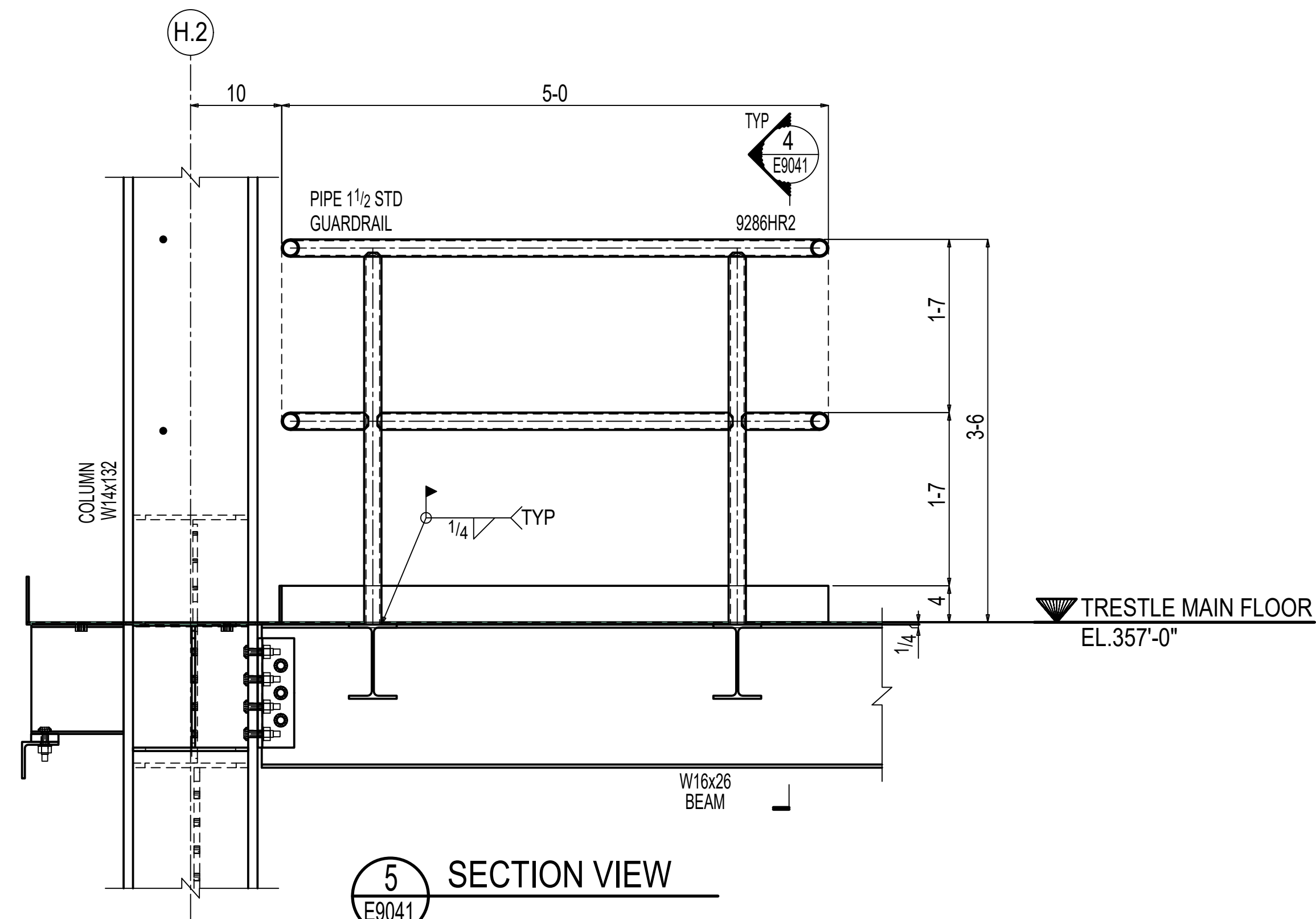
2 TYPICAL HANDRAIL ARRANGEMENT & CONNECTION DETAIL
E9041



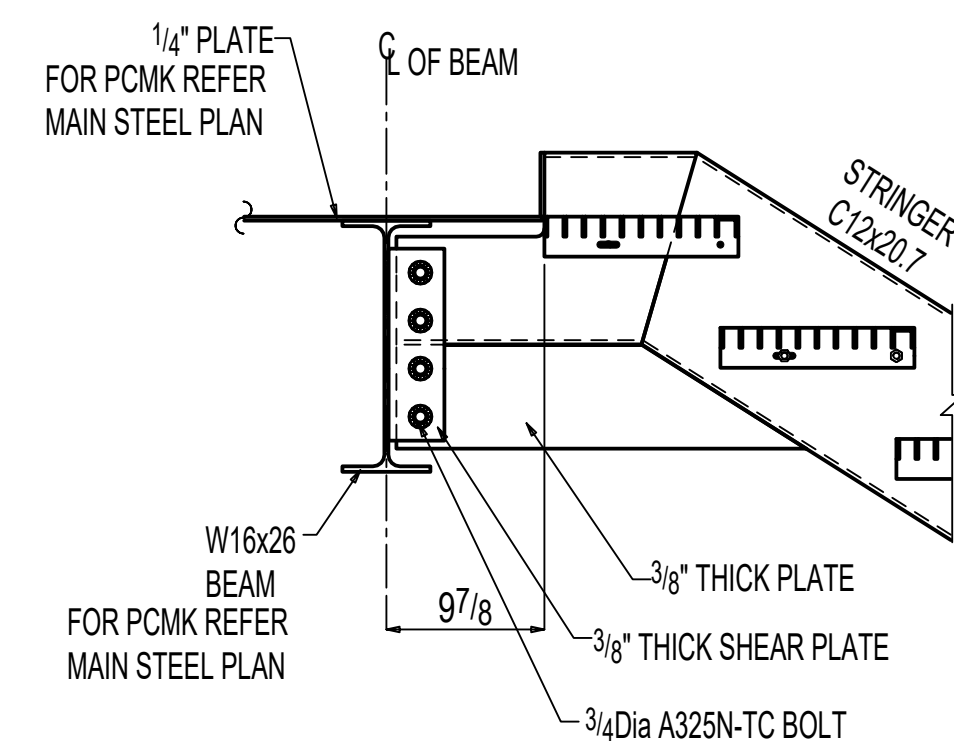
3 TYPICAL SPLICE DETAIL
E9041



4 SECTION VIEW (REF.DWG: 8/SF510)
E9041



5 SECTION VIEW
E9041



6 SECTION VIEW (REF.DWG:1/A516)
E9041

APPROVAL/REVIEW AUTHORITY:			
PLEASE REVIEW THIS DRAWING CAREFULLY. IT REPRESENTS OUR INTERPRETATION OF THE INTENT OF THE CONTRACT DRAWINGS. HOWEVER, THE STEEL FABRICATOR AND THE STEEL DETAILER ASSUME NO RESPONSIBILITY FOR THE DESIGN OR THE ACCURACY OF THE CONTRACT DOCUMENTS. THIS IS THE RESPONSIBILITY OF THE BUYER. UNLESS NOTED FROM THE APPROVAL, IT WILL BE ASSUMED THAT ALL INFORMATION SHOWN HEREIN HAS THE AFFIRMATION OF THE APPROVER AUTHORITY. SUBSEQUENT CHANGES TO INFORMATION SHOWN ON THESE DRAWINGS AFTER FIRST SUBMITTAL WILL BE CONSIDERED AS CONTRACT CHANGES.			
0	ISSUED FOR APPROVAL	06-23-23	JVK
REV.	DESCRIPTION	DATE	INT.
CUSTOMER WALBRIDGE			
JOB NAME TENNESSEE ELECTRIC VEHICLE CENTER			
LOCATION BLUE OVAL CITY STATION, TENNESSEE 38069			
ARCHITECT GALA			
DESCRIPTION SECTION VIEWS (BODY SHOP TRESTLE)			
DRAWN BY: VPL		DATE: 06-22-23	
CHECKED BY: JVK		DATE: 06-22-23	
JOB NO.	SHEET NO.	REV.	
22-008	E9041	0	